

Allstyle

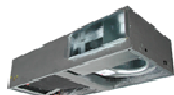
UNCASED TWIN BLOWER Qty 1-11
HFD18-30840G+D-5F*
HFD24-30850G+D-5F*
HFD30-36850G+D-5F*
HFD36-42850G+D-5F*
Housing for HF*
#1-3975
#2-4575
#3-5175
#4-5875
White louvered or solid panels HF*
PL-3975
PS-3975
PL-4575
PS-4575
PL-5175
PS-5175
PL-5875
PS-5875
Cased draw thru, End Discharge AH*
AHF24-42G+D-5*
AHF30-42G+D-5*
AHK30-4Z0G+D-5*
AHK36-5Z0G+D-5*
Cased draw thru, Side Discharge, reversible, AH*
AHL24-42G+D-5*
AHL30-42G+D-5*
AHL30-4Z0G+D-5*
AHL36-5Z0G+D-5*
White louvered or solid panels, AH*
ACP-44L
ACP-44S
ACP-51L
ACP-51S
ACP-55L
ACP-55S
Verticle wall mount, small closet mount, VL
VL24-2Z6G+D-5*
VL30-2Z6G+D-5*
V LX30-3872G+D-5*
V LX36-3872G+D-5*
Louvered wall panel, VL
RTU-1AS - VL
RTU-2AS - VLX
Internal lower panel, VL
LCP-1AS - VL
LCP-2AS - VLX
Down Flow Mobile Home A.H. & Coil
ASDF36-A2Z2G + DFM-4D*
ASDF48-A3Z2G + DFM-4D*
ASDF60-A4Z0G + DFM-5D*
Electric Furnace
DFM-4-D
DFM-5-D
Coil, DFM
ASDF36-A2Z2G+D*
ASDF48-A3Z2G+D*
ASDF60-A4Z0G+D*
DFM Heat Kits
5KWDFM
10KWDFM
3-5 ton Uncased Mobile Home Coil
ASUM60-A480G*
Bi-directional Piston
RP .047 .052 .053 .055 .059 .063 .065 .067 .068
RP .070 .074 .078 .082 .084 .086 .090 .094 .096
TXV- A/C R410A
RP31114 (AS4VT2) 1-2 ton
RP31115 (AS4VT3) 2.5-3 ton
RP31116 (AS4VT5) 3.5-5 ton
TXV HP R410A
RP31117 (AS4VPT2) 1-2 ton
RP31118 (AS4VPT3) 2.5-3 ton
RP31119 (AS4VPT5) 3.5-5 ton



Optional Insulated Housing



Matching Access Panel for Housing



Allstyle HFD Series

UNCASED TWIN BLOWER, Piston	Height	Width B	Depth	(H) Housing	Panel	TXV	HP TXV
HFD18-30840G+D-5F (47)	10.25"	37.25"	22"	3975	P L/S 3975	RP31114	RP31117
HFD24-30850G+D-5F (59)	10.25"	37.25"	22"	3975	P L/S 3975	RP31114	RP31117
HFD30-36850G+D-5F (63)	10.25"	43.25"	22"	4575	P L/S 4575	RP31115	RP31118
HFD36-42850G+D-5F (70)	10.25"	49.25"	22"	5175	P L/S 5175	RP31115	RP31118

Housing for HF*	Height	Width A	Depth	Supply	Return KO
3975	11"	39.75"	24"	7 X 30.625"	7 X 30.625"
4575	11"	45.75"	24"	7 X 36.625"	7 X 36.625"
5175	11"	51.75"	24"	7 X 42.625"	7 X 42.625"
5875	11"	58.75"	24"	7 X 49.625"	7 X 49.625"

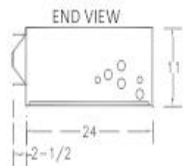
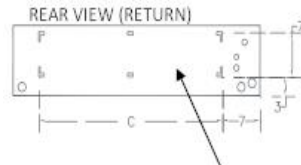
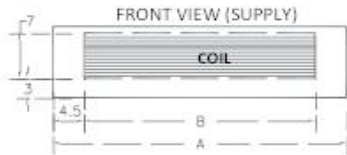
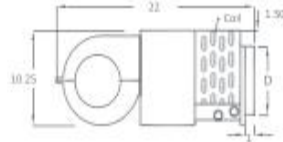
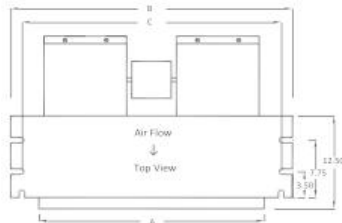
White louvered or solid panels	Length	Width	Filter Size
PL-3975	43.75"	28"	20 X 20 X 1
PS-3975	43.75"	28"	20 X 20 X 1
PL-4575	49.75"	28"	20 X 20 X 1
PS-4575	49.75"	28"	20 X 20 X 1
PL-5175	55.75"	28"	20 X 20 X 1
PS-5175	55.75"	28"	20 X 20 X 1
PL-5875	62.75"	28"	20 X 20 X 1
PS-5875	62.75"	28"	20 X 20 X 1



Optional Insulated Housing



Matching Access Panel for Housing



KNOCKOUT FOR DUCTED RETURN
 (Requires filter grille-field supplied)
 (Ducted return requires non-louvered panel)

Allstyle AH* Series

AHF/AHK	Piston	Height	Width	Length	End Supply	Panel	TXV	HP TXV
AHF24-42G+D-5	(59)	12"	23"	47"	7.5 X 21.5	ACP-51L	RP31114	RP31117
AHF30-42G+D-5	(63)	12"	23"	47"	7.5 X 21.5	ACP-51L	RP31115	RP31118
AHK30-4Z0G+D-5	(63)	12"	23"	51"	7.5 X 21.5	ACP-55L	RP31115	RP31118
AHK36-5Z0G+D-5	(70)	12"	23"	51"	7.5 X 21.5	ACP-55L	RP31115	RP31118
AHL, Side Discharge	Piston	Height	Width	Length	Side Supply	Panel	TXV	HP TXV
AHL24-42G+D-5	(59)	12"	23"	47"	7.5 X 21.5	ACP-51L	RP31114	RP31117
AHL30-42G+D-5	(63)	12"	23"	47"	7.5 X 21.5	ACP-51L	RP31115	RP31118
AHL30-4Z0G+D-5	(63)	12"	23"	51"	7.5 X 21.5	ACP-55L	RP31115	RP31118
AHL36-5Z0G+D-5	(70)	12"	23"	51"	7.5 X 21.5	ACP-55L	RP31115	RP31118
White louvered or solid panels		Length	Width	Filter Size				
ACP-51L		51.25"	27.25"	20 X 20 x 1				
ACP-51S		51.25"	27.25"	20 X 20 x 1				
ACP-55L		55.25"	27.25"	20 X 20 x 1				
ACP-55S		55.25"	27.25"	20 X 20 x 1				



Allstyle VL* Series

					Wall	Lower	410a	410a
Stud mount, upflow	Height	Width	Depth	Supply	Panel	Panel	TXV	HP TXV
VL24-2Z6G+D-5 (59)	36.75"	18.25"	18"	16.5 X10.5"	RTU-1AS	LCP-1AS	RP31114	RP31117
VL30-2Z6G+D-5 (63)	36.75"	18.25"	18"	16.5 X10.5"	RTU-1AS	LCP-1AS	RP31115	RP31118
VLX30-3872G+D-5 (63)	40"	20.5"	22"	19 X 15"	RTU-2AS	LCP-2AS	RP31115	RP31118
VLX36-3872G+D-5 (70)	40"	20.5"	22"	19 X 15"	RTU-2AS	LCP-2AS	RP31115	RP31118
Louvered wall panel	Height	Width		Filter Size				
RTU-1AS - VL	41.75"	22.75"		18 X 18				
RTU-2AS - VLX	44.75"	24.75"		20 X 20				
lower panel				Filter Size				
LCP-1AS - VL	18"	18"		18 X 18				
LCP-2AS - VLX	20"	20"		20 X 20				



Allstyle Mobile Home Coil and AH

					410a	410a
Down Flow Mobile Home A.H. & Coil	Height	Width	Depth	Filter (2)	TXV	HP TXV
ASDF36-A2Z2G + DFM-4D-0 (70)	57.5"	18.5"	26"	16 X 20	RP31115	RP31118
ASDF48-A3Z2G + DFM-4D-0 (82)	57.5"	18.5"	26"	16 X 20	RP31116	RP31119
ASDF60-A4Z0G + DFM-5D-0 (90)	57.5"	18.5"	26"	16 X 20	RP31116	RP31119
Down Flow Electric Furnace	Height	Width	Depth	Motor		
DFM-4-D 3-4 ton	31.5"	17.5"	26"	1/2 HP		
DFM-5-D 5 ton	31.5"	17.5"	26"	3/4 HP		
Draw through Coil, DFM Piston	Height	Width	Depth	Filter (2)	TXV	HP TXV
ASDF36-A2Z2G+D (70)	26"	18.5"	22.5"	16 X 20	RP31115	RP31118
ASDF48-A3Z2G+D (82)	26"	18.5"	22.5"	16 X 20	RP31116	RP31119
ASDF60-A4Z0G+D (90)	26"	18.5"	22.5"	16 X 20	RP31116	RP31119
DFM Heat Kits						
5KW-DFM						
10KW-DFM						
3-5 ton Uncased Mobile Home Coil	Height	Width	Depth	Size	TXV	HP TXV
ASUM60-A480G (90)	18.5"	18.25"	19.5"	3 ton	RP31115	RP31118
				3.5-5 ton	RP31116	RP31119



Allstyle Flow Raters and TXV's

Flow Rater, Piston
RP .047 .052 .053 .055 .059 .063 .065 .067 .068
RP .070 .074 .078 .082 .084 .086 .090 .094 .096
TXV- A/C R410A
RP31114 (AS4VT2) 1-2 ton
RP31115 (AS4VT3) 2.5-3 ton
RP31116 (AS4VT5) 3.5-5 ton
TXV HP R410A
RP31117 (AS4VPT2) 1-2 ton
RP31118 (AS4VPT3) 2.5-3 ton
RP31119 (AS4VPT5) 3.5-5 ton

